

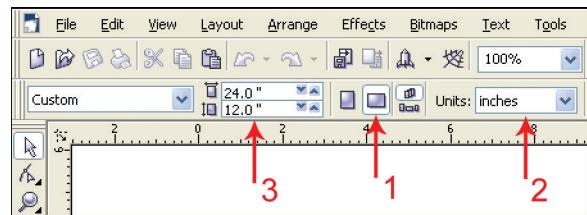
CoreIDRAW X3

Windows XP and Windows Vista

Note: CoreIDRAW X3 was optimized for Windows XP and is compatible with Windows Vista. We also suggest not running it under Windows 95/98. Therefore, we have only included setup instructions for Windows XP and Windows Vista.

1. Make sure that you have installed all Service Releases and software patches from Microsoft. For Windows XP, install Service Pack 2. If you are reading this document from the Software Installation CD-ROM, as a service to you, you can find the file on this CD. For the latest releases, check Microsoft's website, www.microsoft.com. Please contact Microsoft if you have any questions regarding these upgrades. ULS is not responsible for any problems as a result from the usage of these patches.
2. If you have not already done so, install CoreIDraw on your computer, but do not open it yet.
3. It is important that your version of CoreIDraw is updated with the latest patches and service releases. For the latest patches and updates go to CoreIDraw's website, www.corel.com. Be sure to check for any updates from time to time to keep your version up to speed. Please contact CoreIDraw if you have any questions regarding these upgrades. ULS is not responsible for any problems as a result from the usage of these patches.
4. The ULS Windows Printer Driver must be loaded before continuing. Please refer to Section 2-8 on the manual on how to install the driver. If you have already installed the printer driver, you will need to re-insert the Software Installation CD-ROM back into your CD drive at this time.
5. Using Windows Explorer, locate the file named "ULS.CPL" and "ULS.PAL" on the Software Installation CD-ROM, and copy these files over to the C:\Program Files\Corel\Corel Graphics SUITE X3 (13)\Languages\EN\Custom Data\Palettes folder. **Note: ULS.CPL may not show up with a .CPL file extension. It may be listed as ULS with "Control panel extension" shown as a detail.**
6. Open CoreIDraw and start a new graphic.
7. In the main menu at the top of the screen, click on "Window", then "Color Palettes", and then click on "None". Once again click on "Window", then "Color Palettes", and then click on "Open Palette". After the "Open Palette" pop-up box appears, double-click on "ULS.CPL". The color palette will now appear on the right side of the screen.

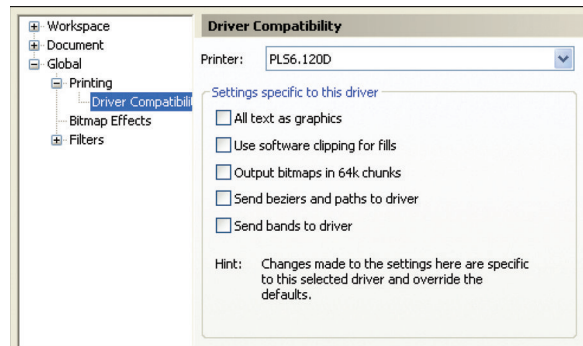
8. On the property bar, click on the landscape orientation (the sideways rectangle) (1). If you would like the drawing units in metric, choose millimeters from the drop down list (2). Now type in the page width and height that matches your laser platform (3).



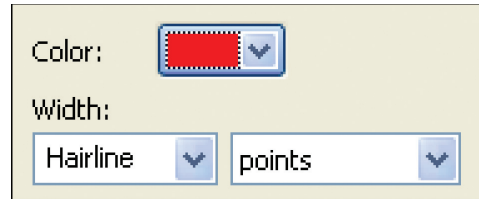
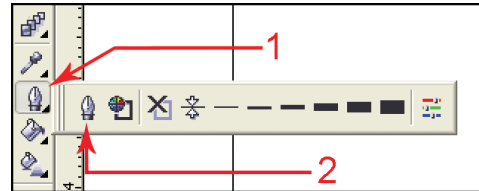
9. We now need to adjust the vertical ruler, on the left side of the screen, to match the rulers in the laser system. To do this, we need to adjust the ruler's vertical origin. Double-click directly on the vertical (side) ruler. The "Options" dialog box will appear. In the vertical origin box, type in the same height value as you did when you set up the page height in the previous step. For example, 12 inches for a PLS3.60. If you would like the scale to be displayed in tenths, choose "10 per Tick" in the "Tick Division" drop-down list box.



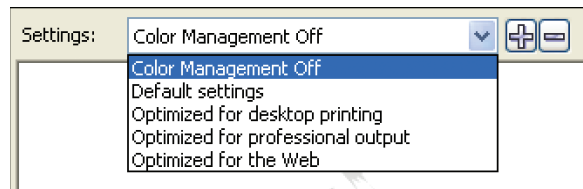
10. While still in the “Options” dialog box, double-click on “Global” to expand the list. Double-click on “Printing” to expand the list. Now click on “Driver Compatibility”. Make sure that the laser system's name is displayed in the printer drop-down list. In the settings specific for this driver dialog box, make sure that **ALL** the check boxes are **UNCHECKED**. Now click on “OK” to close the “Options” dialog box.



11. The next step is to set the default value for the line width and color when drawing graphic objects. To do this, click on the outline tool (1), then the outline pen dialog in the flyout (2). With “Graphic” being the only one selected, click “OK”. Click the down arrow in the Color dropdown box to expand the list and click on the color red. Click the down arrow in the “Width” dropdown box to expand the list and click “Hairline”. The units can be “Inches”, “millimeters” or anything else you prefer. Click OK to close the Outline Pen dialog box.



12. In the top menu, click “Tools”, and then click “Color Management”. Click on the down arrow to expand the “Settings” dropdown list. Click “Color Management Off”, and then click “OK”.



13. Finally, at the top of the screen, click on “Tools”, then “Save settings as Defaults”.
14. The setup defaults for CorelDRAW X3 are now complete. Whenever you start a new document, all of the default settings that we had setup will automatically apply to the new document.

Remove the Software Installation CD-ROM from your CD-ROM drive and store it either back into the pocket of the rear cover of the manual or in a safe place.

Next proceed to section 4 for laser system assembly.